



In-Wall Relay Switch Lite

Smart Switch Panel Instruction Manual

Rev. C-081122

P/N SS02

**Please see separate Smart Relay Lite manual for complete instructions. The Smart Switch Panel is an accessory part of In-wall Relay Switch Lite and only functional when connected with the Smart Relay Lite.*

Product Introduction

Smart Switch Panel is an optional component of the **In-Wall Relay Switch Lite** when they are used together. The **Smart Switch Panel** is designed to work with switch commands from the Zigbee network. For example, after turning off the lights with a mechanical switch panel, you can turn on the lights through Zigbee network commands.

One **Smart Relay Lite** can be connected to one or a series **Smart Switch Panel** (multiple point control).

One **Smart Switch Panel** can be connected to two circuits of loads, each of which must use one **Smart Relay Lite**.

Installation Instructions

Caution: Read this manual before attempting to install the device! Using this product in a manner other than intended voids your warranty. Further, Evvr ApS is NOT liable for any damage incurred with the misuse of this product.

Caution: All installations of this device should be performed by a qualified or licensed electrician!

Caution: Product must be installed on a 10~16A line.

Warning: Turn OFF electrical power from the breaker box or electrical service panel before installing or servicing this product. Improper use or installation can cause **SERIOUS INJURY, DEATH, or LOSS/DAMAGE OF PROPERTY.**

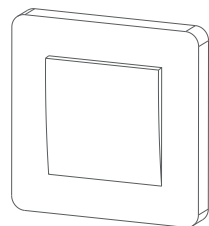
Caution: Use this product in an indoor environment.



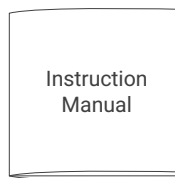
Technical Specifications

Model number	SS02
Input Voltage	AC 85V~245V
Max. Load Power each load	AC 110V/1500W AC 220V/3000W
Min. Load Power	No limit
Switch Type	Normal Close Momentary Switch
Operating Temperature	0~40°C (32°~104°F)
Relative Humidity	5~85% RH
Product Size (L*W*H)	82.0mm * 82.0mm * 36.0mm (3.23in. x 3.23in. x 1.42in.)

Complete Accessories Include



Smart Switch Panel x1



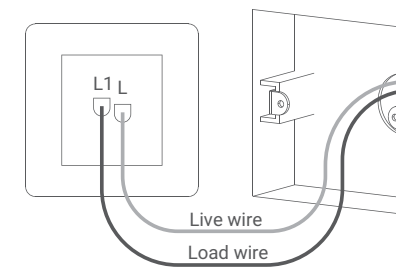
Instruction Manual x1

2 Connect the wires to the switch panel

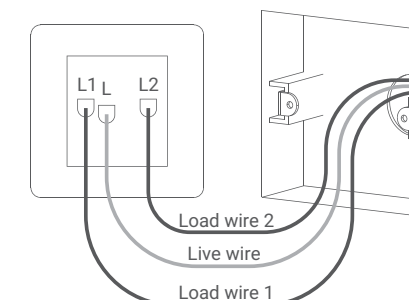
With **Smart Switch Panel** you can control **Smart Relay Lite**. The diagram below shows the connection of wires.

Smart Switch Panel compatible with 1/2 gang switch panel, and two **Smart Switch Panel** can be installed to support 3/4 gang switch panel.

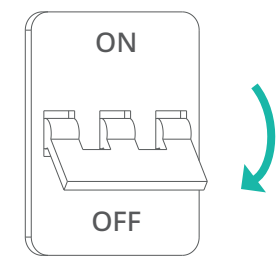
Work with 1 gang switch panel:



Work with 2 gang switch panel:



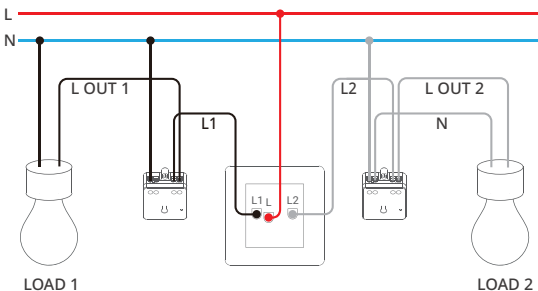
1 Turn off the power



Turn off the power at the circuit breaker for the switch.

3 Overall diagram

If the **Smart Switch Panel** and **Smart Relay Lite** are connected correctly, it should look like diagram below. For more instructions on how to install the **Smart Relay Lite**, please see the **Smart Relay Lite Manual**.

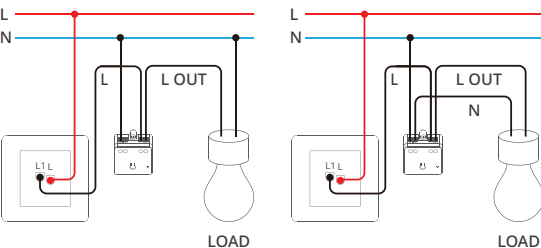


NOTES FOR THE DIAGRAM:

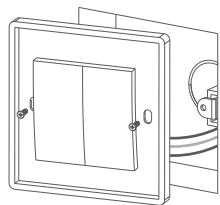
N - neutral wire L - live wire
L OUT - output live wire

LOAD 1 (**Black**) and LOAD2 (**Gray**) are installed using two different connection methods. Please choose the appropriate installation method according to your actual installation environment.

In a **single switch** environment, please choose one of the installation methods to install according to your actual installation environment as diagrams below.

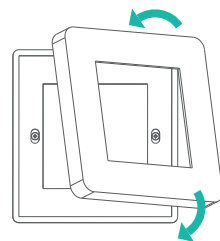


4 Place the switch into the wall box



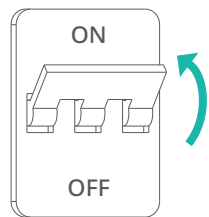
Push all the wires and **Smart Relay Lite** back into the wall box and try to allow as much space for the switch as possible. Place the switch into the box and screw in.

5 Place the switch into the wall box



Attach the switch faceplate and cover the screws.

6 Turn on the power



Turn on the power at the circuit breaker. Now you can try to control the **Smart Relay Lite** with the **Smart Switch Panel**. Or use your phone or voice control.

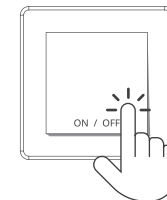
Operating Instructions

Note: All operations require a 5-second wait after the Smart Relay power up before use.

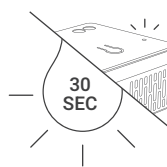
Note: The **Smart Relay Lite** will leave the current network.

Set the Smart Relay Lite into inclusion/pairing mode with Smart Switch Panel

Working with **momentary switch button**
Quickly click the switch button **10 times**.



Device will leave the current network and re-enter pairing mode. The load light must be on, at the same time the indicator light will slowly flash **BLUE**, wait until pairing is successful or until **30** seconds timeout.



Troubleshooting

Q1 Cannot switch lights on and off normally.

Please check the wiring of **Smart Switch Panel** is properly connected or not.

1. Check whether the **Smart Relay Lite** indicator is on when the load light is on. If the indicator is not on, it may be that the 'live IN wire' and 'live OUT wire' of the main's power line are not connected properly.
2. If the Smart Relay indicator is on, check whether the panel terminal is properly connected.
3. Please refer to the installation instructions section to check for proper wiring.

Disposal Instructions

This product must not be disposed of with your other household waste. Instead, it is your responsibility to dispose of your waste equipment by handing it over to a designated collection point for the recycling of waste electrical and electronic equipment. The separate collection and recycling of your waste equipment at the time of disposal will help to conserve natural resources and ensure that it is recycled in a manner that protects human health and the environment. For more information about where you can drop off your waste equipment for recycling, please contact your local city office, your household waste disposal service or the shop where you purchased the product.

Certifications (regional)



Warranty Policy

For warranty information, please visit
<https://www.evvr.io/warranty>

EVVR

Please contact us for any technical issue
support@evvr.io